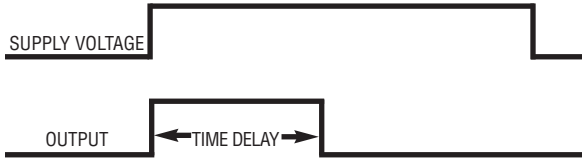


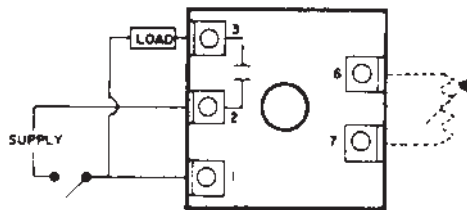
**OPERATION**

When voltage is applied to the input terminals, the load energizes and the time delay begins. Upon completion of the delay period, the load de-energizes. Reset during or after the delay period is accomplished by removal of the input voltage.

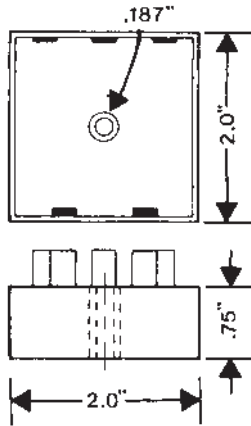
The TSB Series is a three input terminal device.



**WIRING**



**DIMENSIONS (INCHES)**



MODEL NUMBER >>>>>	TSB	A	C
<b>Supply Voltage</b>			
24 VAC	24		
120 VAC	120		
240 VAC	240		
<b>Type of Operation</b>			
Fixed	F		
External Resistor Adjustable; See page 84 for resistor selection	R		
Screwdriver Adjustable	S		
<b>Delay Period</b>			

See page 84 for standard ranges available

Example:  
TSB-120-ARC-100—Interval on operate, 120 VAC, external resistor adjustable from 1 to 100 seconds.

\* The TSA Series is only UL Recognized in the 120VAC model. For 24VAC model contact the factory for availability.



Interval Solid-State Output



**SPECIFICATIONS**

TIMING RANGES	Virtually unlimited. See page 84 for standard ranges available.	
OUTPUT RATING	Solid-state, SPST-N.O. 1 amp resistive; 1250 VA inrush, 125 VA run @ 120 VAC, inductive.	
TIMING TOLERANCES	Minimum Setting	+0–20%
	Maximum Setting	±10%
REPEATABILITY	1% maximum; no first cycle effect	
RESET TIMES	Before Time Out	100 mSEC
	After Time Out	50 mSEC
RECYCLE TIME	40 mSEC	
SUPPLY VOLTAGE	24, 120, or 240 VAC, 50/60 Hz; ±10%	
FALSE TRANSFER	No	
DUTY CYCLE	Continuous	
ENCLOSURE	Surface mounted; totally encapsulated with a high quality epoxy for environmental protection.	
TEMPERATURE RATING	Operate	32° to 131°F (0° to +55°C)
	Storage	-49° to 185°F (-45° to +85°C)
TERMINATIONS	1/4" quick disconnect terminals	
WEIGHT	NET: 1.28 oz	Shipping: 1.6 oz.